


CASCADE JR. HIGH LIBRARY

LIB 534
LIBRARY RE-DESIGN PROJECT
PSU, FALL 2005



FACTORS TO CONSIDER:

- **Enrollment:** 545 with 3.94% yearly turnover.
 - **Learning Levels:** 6th-8th grade, Life Skills, shared campus with High School.
 - **Size of Collection:** 13,000 materials.
 - **Scheduling:** Flexible
 - **Number of LM Staff:** One, with 10-8th grade aides each trimester, one parent volunteer (once a week/two hours).
 - **Teaching Methods:** Collaboration on the rise
 - **Technologies:** Student computers, AV equipment.
 - **Self-Service:** 2 Copiers, Laminator, Scantron Grading Machine
- 

BEFORE:

- Circulation
 - Reference
 - Books
 - Meeting Place
 - Study Area
 - Display
 - Read-Aloud Area
- 

BEFORE

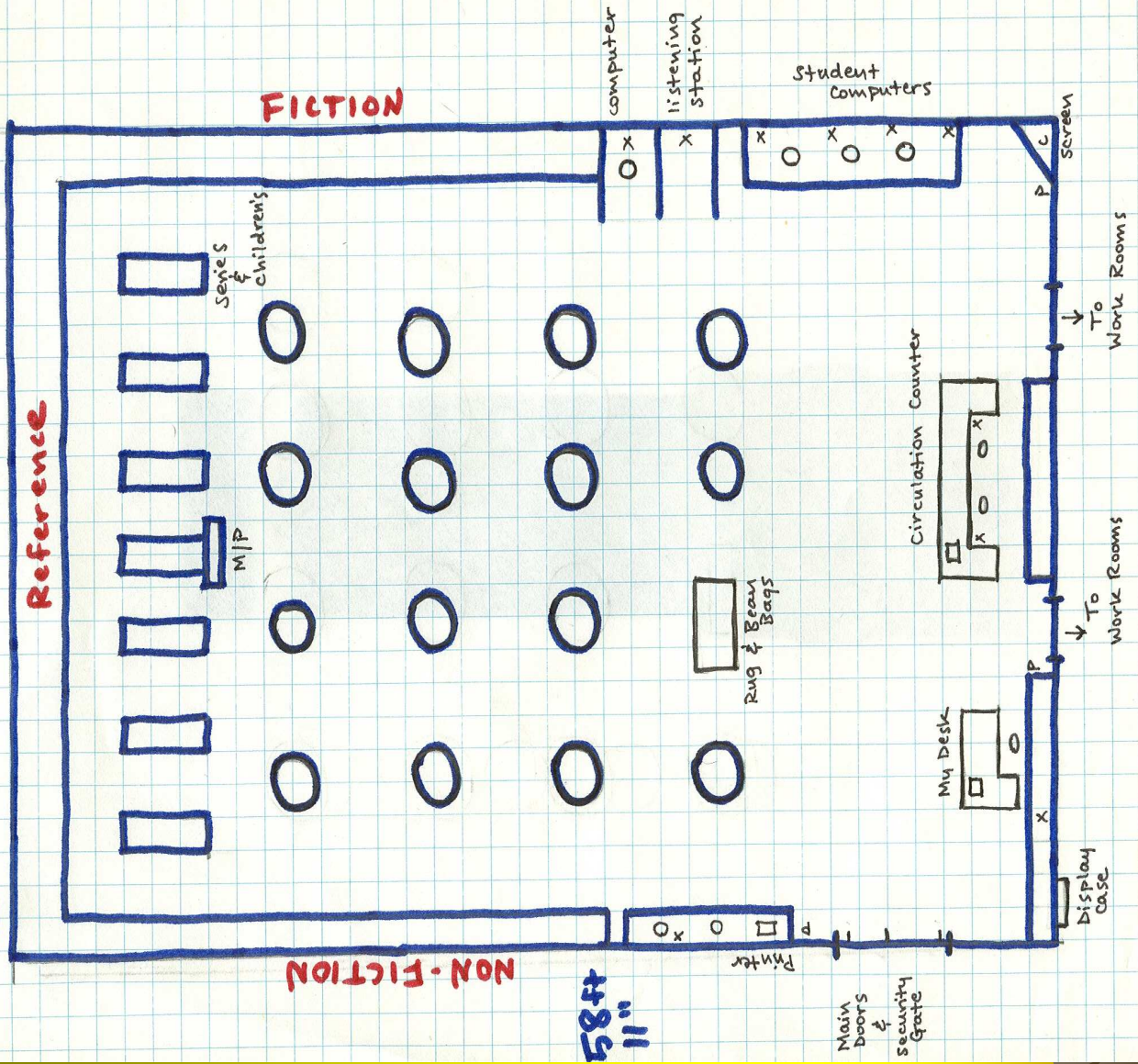
42ft 6 1/2"

Reference

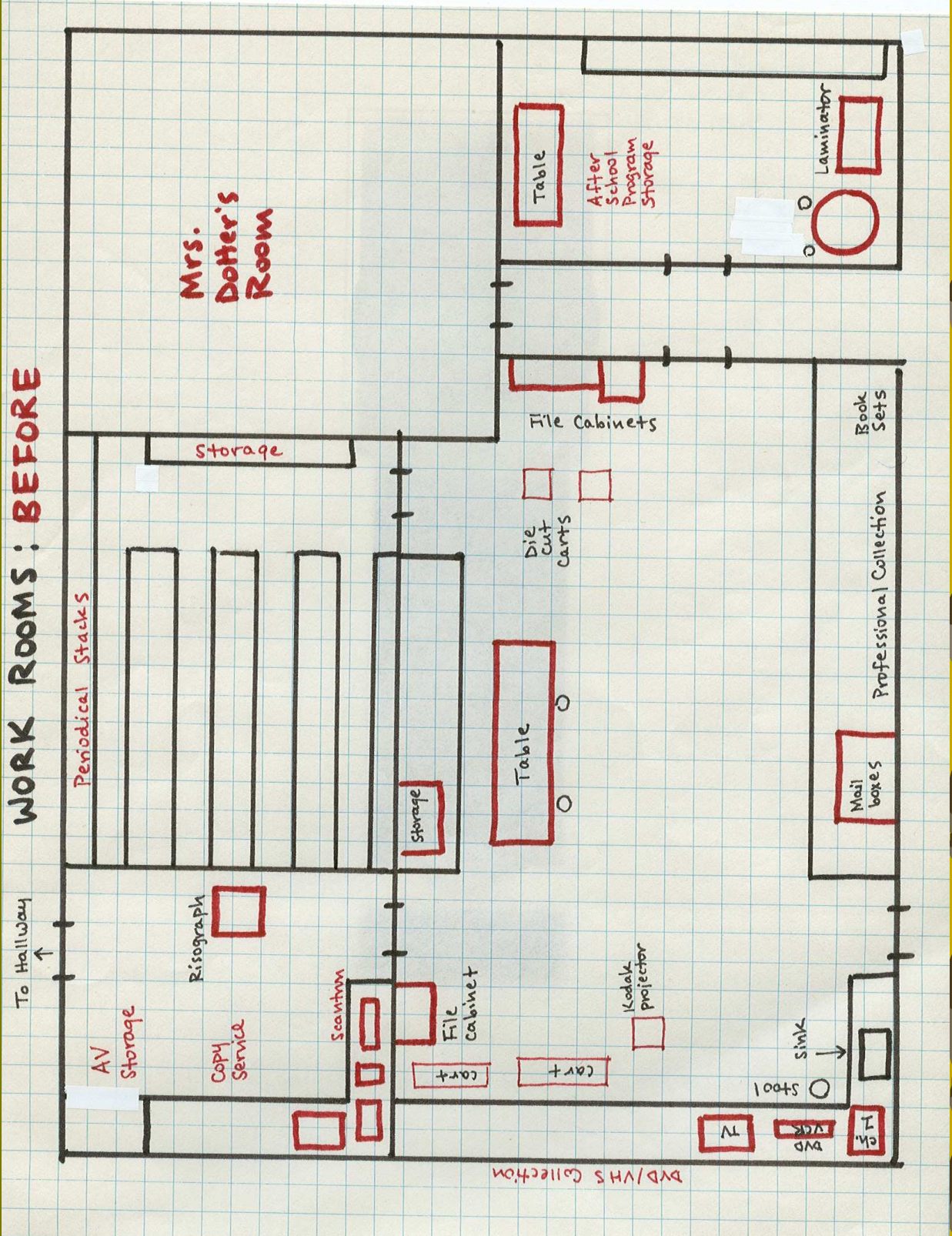
FICTION

NON-FICTION

58ft 11"



WORK ROOMS: BEFORE



Travel Within

- Circulation
- Personal Work Space
- Work Rooms
- Special Collections:
Textbooks, Study
Supplements
- Literary Promotion
- Posters



Further Within

- Listening Station
- Student Computer (under construction)
- Special Collections:
Non-Fiction Holocaust & Jr. High Yearbooks
- Study Corner
- Fake Tree



EVERY PROBLEM HAS A SOLUTION:




- Problem: small space for big dreams.
- Solution: make the most of what exists.

****Illusion of Space****

mirrors
skylights

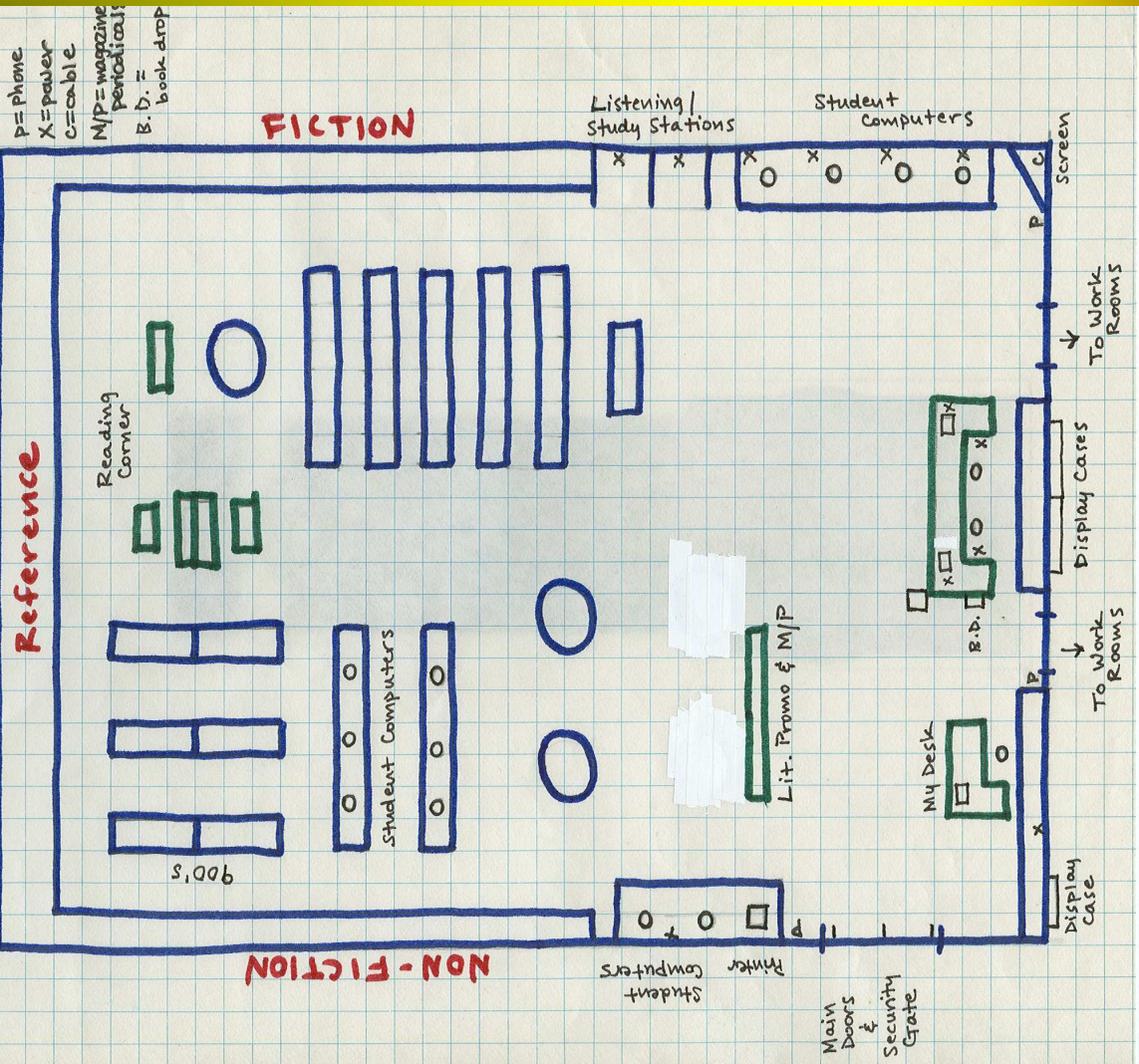


AFTER:

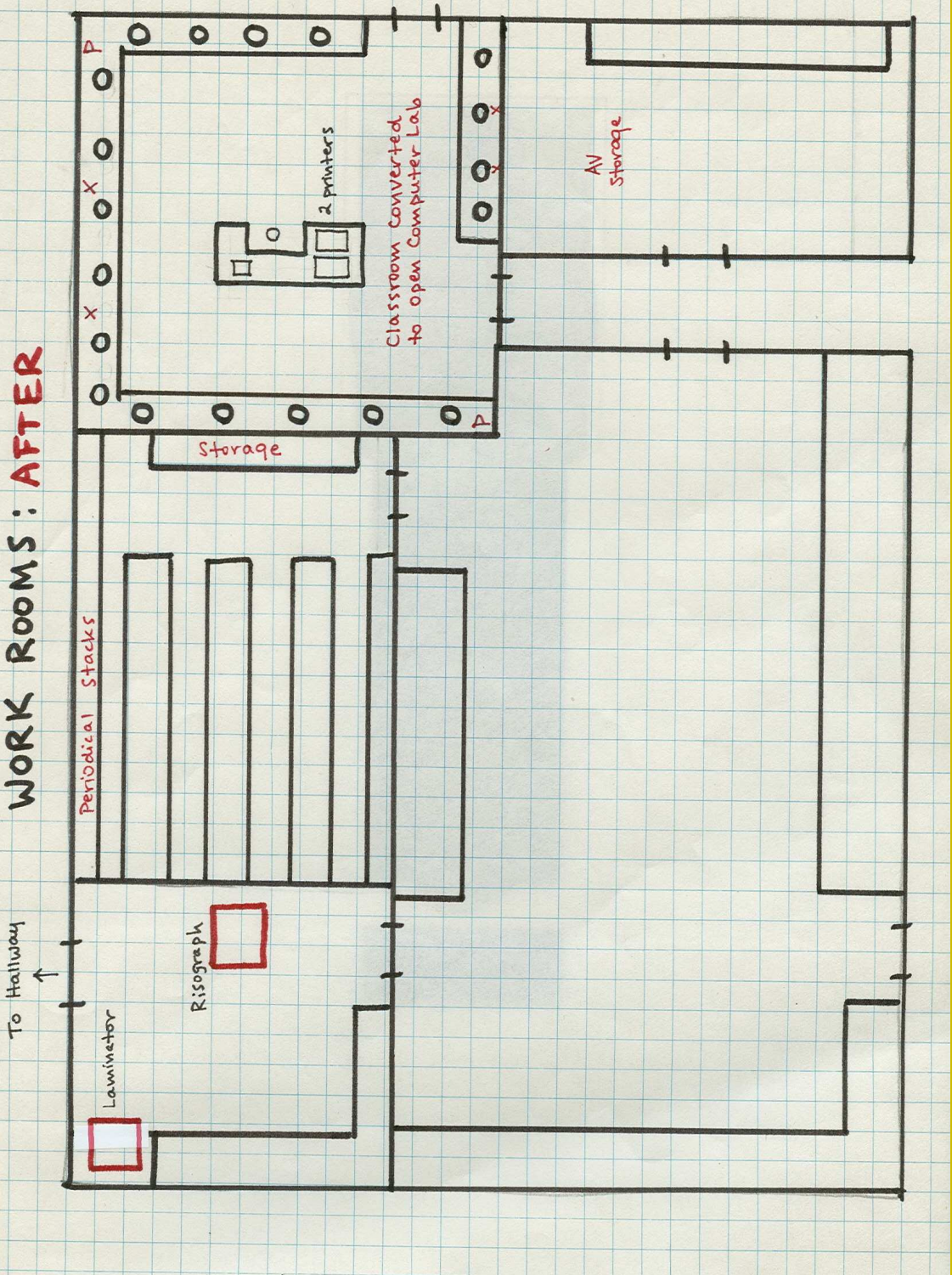
- Classroom Instruction
 - Literature & Reading Promotion
 - Production & Repair
 - Storage
 - Recreational Reading
 - Student Access to Technology
 - Circulation (book drop, counter remodeled)
- 

AFTER

Reference



WORK ROOMS : AFTER



CONCLUSIONS:

- Traffic Flow: Improved
- Noise Control: Neutral
- Long Range Growth: Not Satisfied
- Student Access: Improved
- Cost \$\$
Major Reconstruction: roof, electrical, cable, phone



“Whatever the cost of our libraries, the price is cheap compared to that of an ignorant nation.”

~Walter Cronkite

